

EN: TVDIGI – USER MANUAL

Digital HDTV Antenna

Before using this antenna, please read this instruction manual carefully.

PACKAGE CONTENTS

- User manual × 1
 - HDTV antenna × 1
-

PRODUCT SPECIFICATIONS

Model number: HDTV-SM07

Frequency range: VHF 174–230 MHz; UHF 470–862 MHz

VSWR: ≤ 2.0

Impedance: 75 Ω

Power rating: 20 W

Power supply: USB port (5 V / 500 mA)

Polarization: Horizontal / Vertical

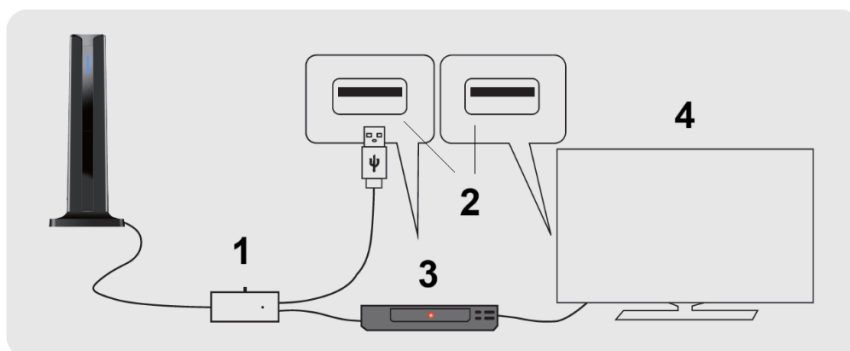
ANTENNA CONNECTION

First, connect the amplifier and coaxial cable to the **ANT/IN** or **CABLE IN** port on the back of the TV or Set-Top Box (STB).

Then plug the amplifier's USB connector into an available USB port on the back of the TV/STB, or into a wall outlet using a USB power adapter, to ensure the amplifier operates properly.

Connect to Set-Top Box (STB)

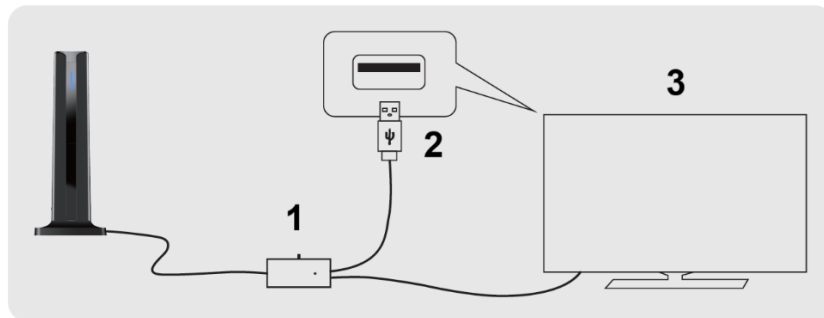
Please connect the USB connector to the USB port on the back of the Digital Set-Top Box or TV.



1. Amplifier
 2. USB port
 3. STB
 4. TV
-

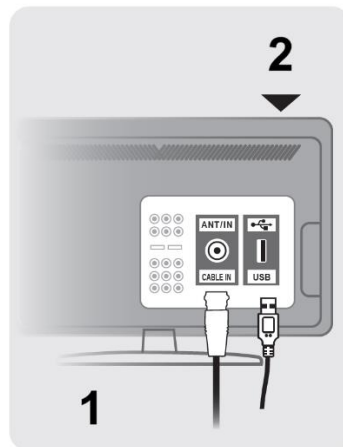
Connect Directly to HDTV

Please connect the USB connector to the USB port on the back of the TV.



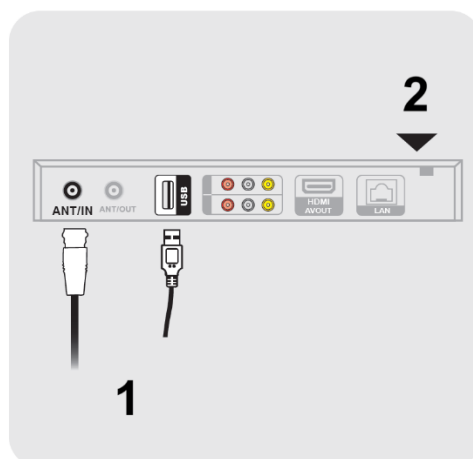
1. Amplifier
2. USB port
3. TV

Connect to HDTV – Diagram



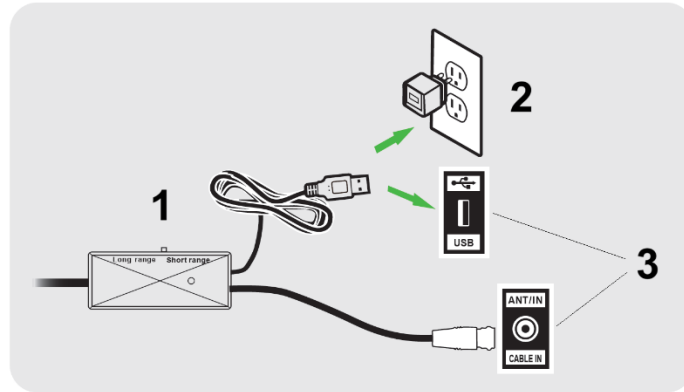
1. Back of HDTV
2. From antenna

Connect to STB – Diagram



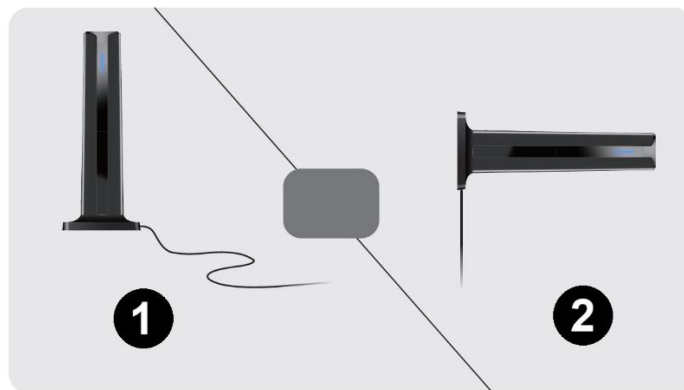
1. From antenna
2. Back of Set-Top Box

Proper Power Supply Selection – Diagram



1. From antenna
2. USB adapter 5 V
3. Back of TV or STB

ANTENNA MOUNTING DIAGRAM



1. Vertical
2. Horizontal

Tips:

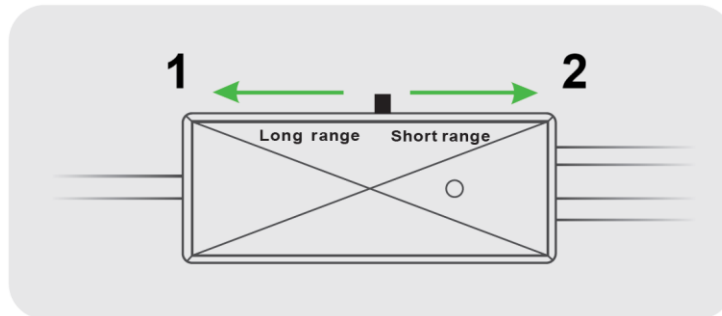
- The antenna contains magnets that can attach to iron or metal surfaces.
- Antenna placement and direction may vary depending on your location.
- Try positioning the antenna both vertically and horizontally. Then scan for channels and choose the position that receives the most TV channels.

SCAN FOR CHANNELS

1. In the TV setup menu, set the mode to **Antenna** or **Air**. Refer to your TV manual for detailed instructions.

2. While in the TV setup menu, set the TV to **scan for channels**. This function may also be called **Auto Program**, **Channel Search**, or **Channel Scan**. Refer to your TV manual for detailed instructions.

HOW TO USE THIS SWITCH



1. Red light condition (far from the signal tower)
2. Green light condition (close to the signal tower)
3. Amplifier

Red Light Condition

When the switch is set to the **red light**, the amplifier operates in **high-gain mode**.

If the signal is weak due to being far from the transmission tower, switch to this mode. Do not use this mode if the signal is already strong.

Green Light Condition

When the switch is set to the **green light**, the amplifier operates in **low-gain mode**.

Use this mode when you are close to the signal transmission tower. If the signal is weak while in green light mode, switch to the **red light high-gain mode**.

Remark

If signals cannot be received while using the amplifier, adjust the amplifier to the **low-gain mode** and try again. In some situations (for example, if your house is very close to a broadcast tower), the amplifier may cause **self-oscillation**, which can interfere with signal reception.

FAQ

Q: Will all the channels I receive be High Definition (HD)?

A: Not all digital signals are High Definition (HD). Make sure you are using a High Definition Television (HDTV) with a built-in ATSC tuner. When connecting the antenna to a third-party receiver, make sure it is capable of receiving HD signals. Otherwise, HD channels cannot be received.

Q: Can the antenna be placed behind the TV?

A: Yes, but this may not be the ideal location. The TV can block part of the signal, which may weaken reception.

Q: Are channel lineups available?

A: No. The channels you can receive depend on several factors, such as the distance to the transmitting towers, your elevation above ground, the direction the antenna faces, and obstacles such as trees or buildings. Once you run the **channel scan** function on your TV, you will see which channels are available in your area.

Q: Is this the same as a Freeview box?

A: No. This is an antenna that connects to the back of a **Freeview-enabled TV**. It allows you to receive broadcast channels without installing long cables throughout the house.

Q: How many channels can I receive?

A: The number of channels available depends on what is broadcast in your area. Reception may vary based on terrain and obstacles such as trees, buildings, hills, or mountains. The fewer obstructions there are, the better your chances of receiving strong digital signals.

Visit <http://dtv.gov/maps> and enter your address to see a list of channels likely available in your area.

TROUBLESHOOTING

- Check that the antenna is correctly connected to your HDTV or third-party HD receiver.
 - Reposition the antenna to a different location, such as higher on a wall or near a window. Facing the direction of the broadcast tower usually provides the best results. Signal strength can vary depending on distance from the tower, hills, buildings, and tall trees. Always re-scan for channels after moving the antenna.
 - If a channel is missing, try rotating the antenna **10–20 degrees** in either direction to avoid signal reflection, or move the antenna to another location. Then re-scan for channels.
 - If the picture or sound freezes, or if blocks appear on the screen, this is often caused by a weak or unstable signal. Try moving the antenna or pointing it toward the broadcast tower for that channel.
 - Not all digital signals are High Definition (HD). Make sure you are using an HDTV with a built-in ATSC tuner. When connecting the antenna to a third-party receiver, ensure it supports HD reception. Otherwise, HD channels cannot be received.
-

INSTRUCTIONS FOR RECYCLING AND DISPOSAL:



This label means that the product cannot be disposed of as other household waste throughout the EU. To prevent potential damage to the environment or human health from uncontrolled waste disposal. Recycle responsibly to promote the sustainable use of material resources. If you want to return a used device, use the drop-off and collection system, or contact the retailer from whom you bought the product. The retailer can accept the product for environmentally safe recycling.



A declaration by the manufacturer that the product complies with the requirements of the applicable EU Directives.