

EN: STEAMLA – USER MANUAL

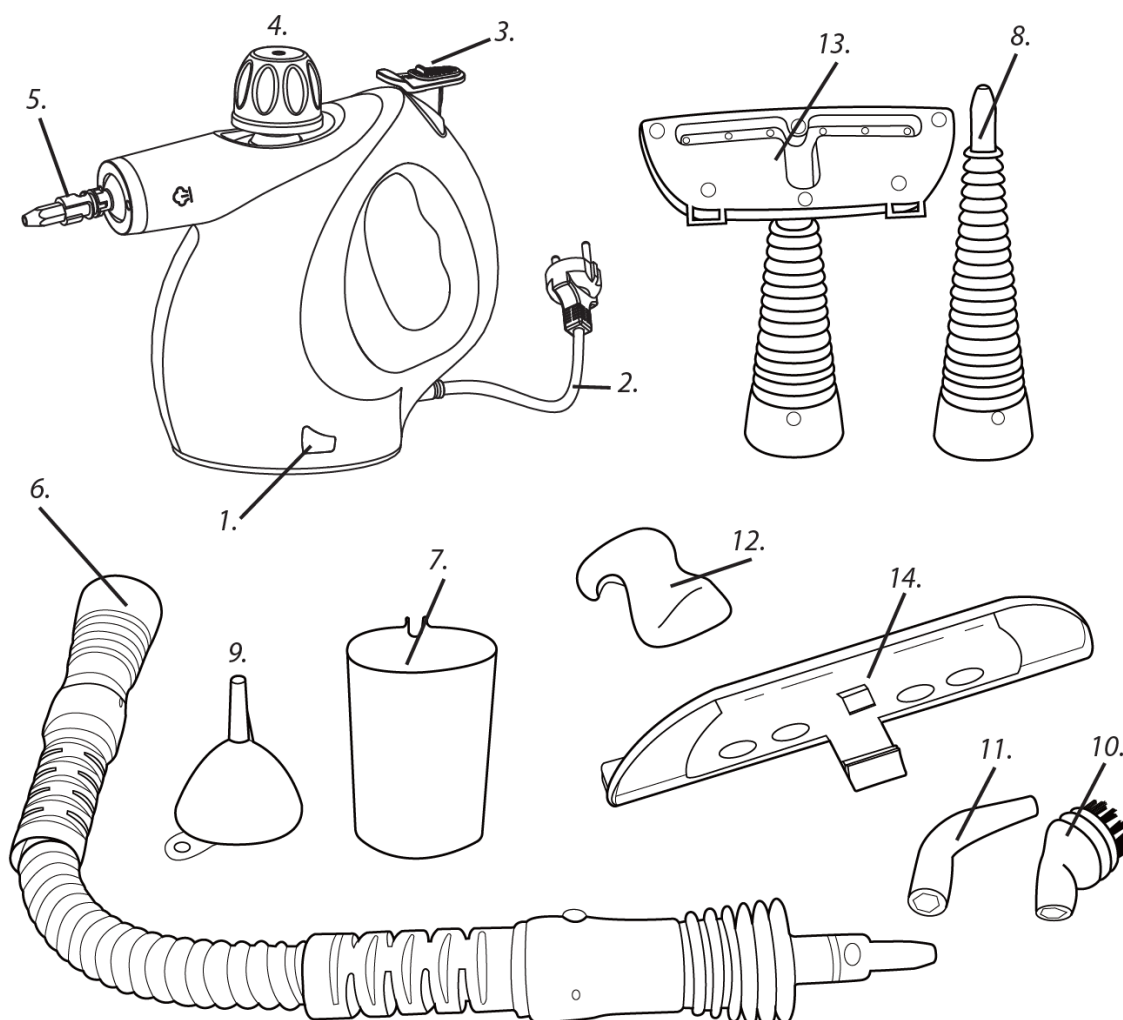
Multifunctional Steam Cleaner and Sanitizer

TECHNICAL SPECIFICATIONS

- Voltage: AC 220V-240V 50Hz / 60Hz
- Power: 1,000W
- Total Capacity: 450 ml
- Maximum Usable Capacity: 350 ml
- Steam Pressure: 2.5 - 3.5 bar
- Steam Output: 25-35 g/min
- Operating Temperature: 135°C
- Fuse Temperature: 169°C

WARNING: The equipment must be disconnected from the power source after use and before cleaning.

When the device is connected to power, it will start operating immediately. The light (1) will turn on while heating. Once it reaches the ideal operating temperature, the light will turn off. To release steam, move the lock (3) to the unlock position with your finger and press the steam button (5).



1. Power LED
2. Cable and Plug
3. Steam Button
4. Safety Cap
5. Short Nozzle
6. Extension Tube
7. Measuring Cup
8. Long Nozzle
9. Funnel
10. Brush
11. Curved Nozzle
12. Towel Sleeve
13. Fabric Cleaner
14. Glass Cleaner

SAFETY PRECAUTIONS:

- The product must not be used by children under any circumstances. Keep out of reach of children.
- To prevent electric shock, do not wet or submerge the cable or plug in water or other liquids.
- The device's cable and plug cannot be replaced by the user. If the cable is damaged, it must be replaced by the manufacturer or an authorized service agent.
- This product is for domestic use only and should not be used for industrial applications.
- Do not connect the product to power until the water tank is filled.
- During operation, the tank opening must be tightly sealed, and the safety cap must be secured in its position.
- A grounded plug must be used.
- **DURING USE, THE DEVICE BODY MUST NOT BE TILTED MORE THAN 45 DEGREES.** If tilted further, boiling water may be released along with the steam.
- Do not direct steam toward people or animals.
- Before refilling water, unplug the power cord. It is necessary to unplug the power cord after using the machine, before cleaning it, and while it is being repaired.
- Do not add any rust removers, odor counteragents, alcohol, or detergent to the tank, as such fluids will damage the tank.
- Do not use for cleaning swimming pools.
- The liquid or steam must not be directed toward equipment containing electrical components, such as the interior of ovens.
- **RISK OF BURNS.**
- **OVERFILLING THE TANK WILL AFFECT STEAM GENERATION AND RESULT IN EXCESSIVE STEAM PRESSURE. DO NOT FILL MORE THAN 350 ML.**

OPERATING INSTRUCTIONS:

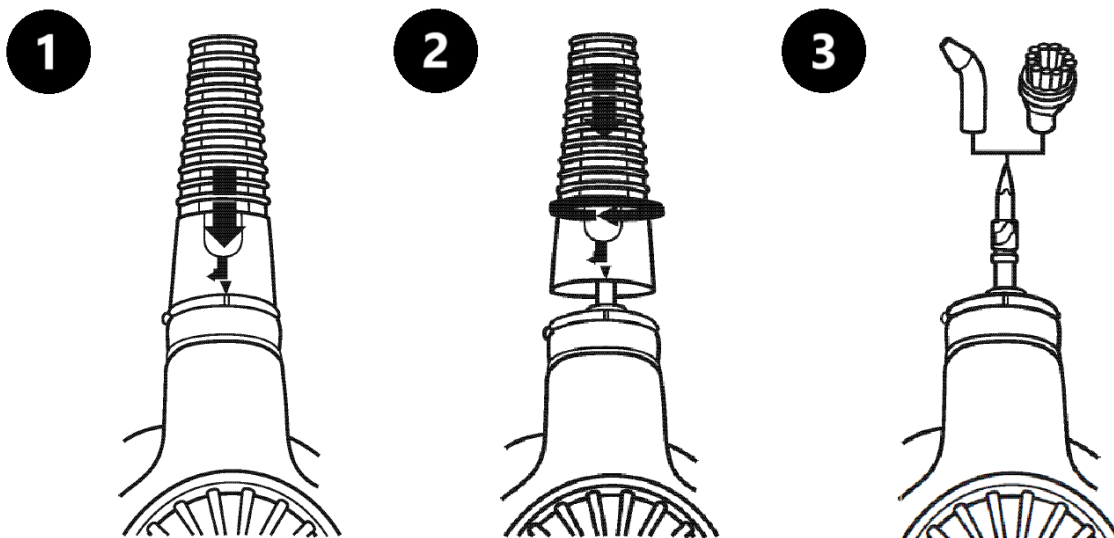
1. Unpack the product, check the accessories and documents supplied with the product, and ensure that the product and accessories are undamaged.
2. Before use, carefully read the User Manual.
3. Place the steam cleaner on a level surface, press down on the safety cover, unscrew the safety cap counterclockwise, and then install the funnel. The safety cap cannot be opened if there is pressure in the tank to ensure user safety.

4. **THE TOTAL CAPACITY OF THE TANK IS 450 ML, BUT ONLY FILL A MAXIMUM OF 350 ML OF WATER IN THE TANK, AS THE WATER WILL VAPORIZE INSIDE THE RESERVOIR, FILLING THE EMPTY SPACE. IF THERE IS NO EMPTY SPACE INSIDE THE TANK, THE UNIT WILL NOT BE ABLE TO GENERATE STEAM.**
5. Reinstall the safety cap and tighten it in its position.
6. Check the power supply and plug, and confirm that they meet the requirements specified in the User Manual. Then, connect it to the power source.
7. After plugging it in, the light at the bottom will turn on, indicating that the unit is heating up and the pressure is increasing. When the light turns off, the steam cleaner is ready for use. At this point, lightly press the steam button and check whether steam is coming out of the nozzle. (Do not aim the spray nozzle at other people or animals).
8. If steam is released, install the appropriate accessories according to your needs after releasing the button.
9. Press the steam button again to perform the required operations.

After use:

1. After using the cleaning machine, unplug the power cord and disconnect the power source.
2. Press the steam button to release the pressure until no steam is emitted.
3. Slowly unscrew the safety cap but do not remove it completely; the residual steam will be released slowly until no steam is emitted.
4. Place the machine in a cool place to cool down for approximately five minutes.
5. Finally, fully remove the safety cap, empty the residual water from the tank, and wipe the exterior surface with a dry cloth.
6. Reinstall the safety cap on the body of the machine and tighten it in its position.

USING ACCESSORIES



Installing the Long Nozzle:

1. Hold the brush pipe section in your hand.
2. Align the arrow on the brush with the single line mark on the spray nozzle on the body of the machine.

3. Insert the brush.
4. Turn the brush clockwise.
5. Align the arrow on the brush with the double line mark on the spray nozzle on the body of the machine, as shown in Figure 1.
6. Secure the brush on the machine so that it does not move.

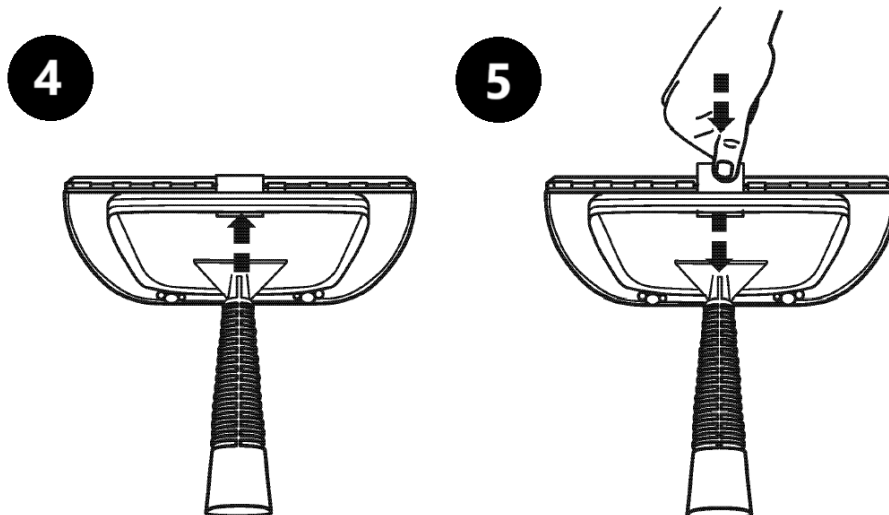
Removing the Long Nozzle:

1. Turn the brush counterclockwise as shown in Figure 2.
2. Align the arrow on the brush with the single line mark on the body of the machine.
3. Now, the brush can be removed.

Installing the Extension Tube:

The extension tube is installed in the same manner as the long nozzle.

Installing the Short Nozzle:



1. Align the spray nozzle with the short nozzle, as shown in Figure 3.
2. Push the attachment until it is in place.
3. Since the nozzle can be positioned in six directions, the angle and direction can be adjusted during installation.

Installing the Curved Nozzle / Brush:

The curved nozzle and brush are installed in the same manner as the short nozzle.

Installing the Fabric Cleaner:

1. Place the towel sleeve (12) over the fabric cleaner (13).
2. Connect it to the extension tube (6) to soften and remove wrinkles from clothing or curtains.
3. Hang the clothing on a shower rod or a clothing hook using a sturdy hanger.
4. Activate the steam cleaner and move the tool over the fabric, being careful not to concentrate the steam in one area.

Installing the Window Cleaner:

1. To easily clean windows and doors, connect the window cleaner (14) to the fabric cleaning tool (13).
2. First, remove the towel sleeve (12) from the fabric steamer tool (13), then hook and click the window cleaner into place.
3. Connect the attachment to the long nozzle and easily clean your windows and doors (Figure 4).
4. To remove the window cleaning tool, simply pull the tab to release it from the fabric steamer tool (Figure 5).

Refilling the Tank During Use:

1. Unplug the power cord.
2. Press the steam button to release the pressure until no steam is emitted.
3. Slowly unscrew the safety cap but do not remove it completely; the residual steam will be released slowly until no steam is emitted.
4. Place the machine in a cool place to cool down for approximately five minutes.
5. Finally, fully remove the safety cap.
6. Use the funnel and measuring cup to refill the appropriate amount of water in the tank.
7. Reinstall the safety cap on the body of the machine and tighten it in its position.

INSTRUCTIONS FOR RECYCLING AND DISPOSAL:



This label means that the product cannot be disposed of as other household waste throughout the EU. To prevent potential damage to the environment or human health from uncontrolled waste disposal. Recycle responsibly to promote the sustainable use of material resources. If you want to return a used device, use the drop-off and collection system, or contact the retailer from whom you bought the product. The retailer can accept the product for environmentally safe recycling.



A declaration by the manufacturer that the product complies with the requirements of the applicable EU Directives.