

EN: RIBEPUMP – USER MANUAL

Device Specifications:

- **Model number:** FR-336
- **Input:** 5V/1A
- **Power:** 5W
- **Li-ion Battery:** 3.7V, 1200mAh, 4.44Wh

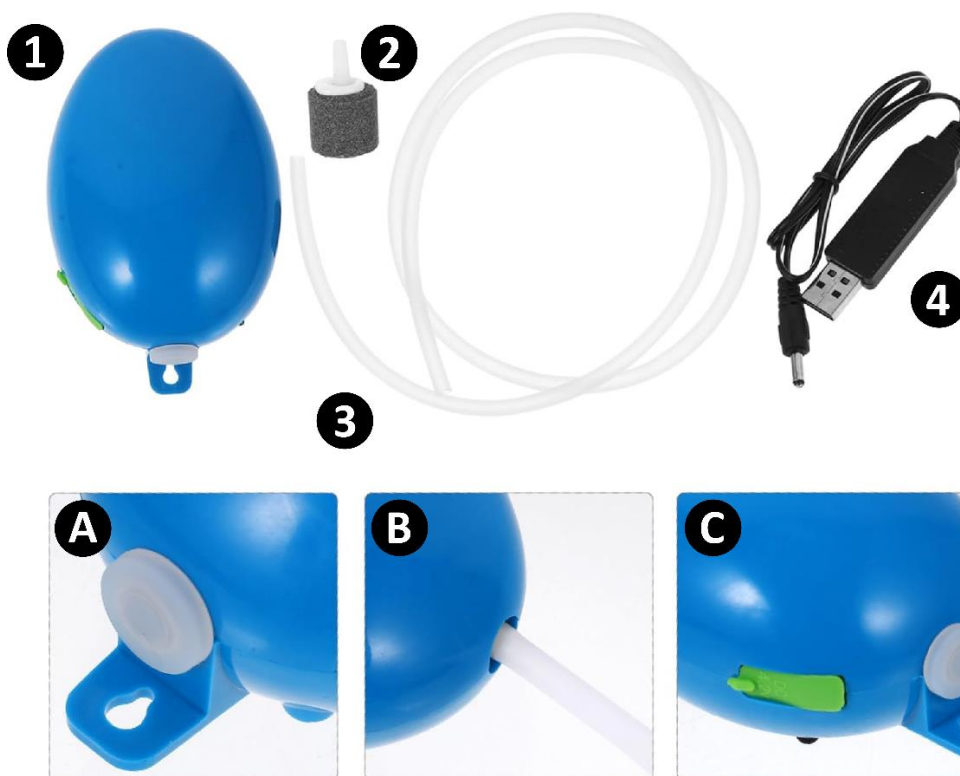
How the Device Works:

The pump contains a diaphragm or piston powered by an internal electric motor. The diaphragm/piston vibrates rapidly, compressing and pushing air through the pump. The released air forms bubbles that rise to the surface, agitating the water and enhancing oxygen exchange by absorbing oxygen from the air and releasing carbon dioxide. This bubbling action circulates the water, preventing stagnation and ensuring even oxygen distribution. When connected to a sponge filter or under-gravel filter, the rising bubbles create suction, pulling water through the filter media to trap debris.

Key Benefits of Using an Air Pump:

- **Improves oxygen levels** – Essential for fish and beneficial bacteria.
- **Enhances water movement** – Prevents stagnant areas in the tank.
- **Supports filtration** – Works with sponge and under-gravel filters.

Packaging Contents and Device Overview:



1. Main unit (air pump)
 2. Sponge filter
 3. Air tube
 4. Charging cable
-
- A. Pump filter cover
 - B. Air tube insertion slot
 - C. Device charging slot

Instructions for Use:

1. Mount the device onto the **RIBETINA** side pocket by sliding the mounting pin over the pocket edge. Alternatively, you can hang the device using the hanging hole at the top or place it on a flat surface using its rubber feet.
2. Connect the flexible air tube into the designated slot on the device.
3. Guide the other end of the tube through the inlet on top of the **RIBETINA** cover.
4. Open the **RIBETINA** hand hole and retrieve the tube end.
5. Attach the sponge filter by sliding the filter pin into the translucent air tube.

Charging Instructions:

1. Connect the device to a power source.
2. Insert the **DC 5V barrel tip** of the charging cable into the charging socket (covered by a green plastic cover) on the device.
3. Connect the other end of the cable to a USB-compatible power bank or a suitable wall adapter (power bank and adapter not included).
4. Once fully charged, the device can operate for up to **4 hours of continuous use**.

Basic Safety Instructions:

1. Installation Safety

- Place the air pump **above water level** to prevent water backflow. If placing it below water level, use a **check valve** to stop water from entering the pump.
- Keep the pump **dry and away from water** to avoid electrical hazards. **Do not submerge** the pump.
- Ensure **proper ventilation**—do not cover the pump, as it may overheat.

2. Electrical Safety

- Use only the **recommended voltage** as specified in the user manual.
- Keep **power cords and plugs dry**—never touch the plug with wet hands.
- **Unplug the air pump** before performing any maintenance or adjustments.

3. Operation & Usage

- Check for **unusual noise or overheating**—turn off the pump if you notice any issues.
- **Do not block the air outlet**, as this may damage the pump.

- Avoid running the pump **continuously unless necessary**—some models require periodic rest to extend lifespan.

4. Maintenance & Cleaning

- **Clean air tubing and air stones regularly** to prevent clogging and reduced airflow.
- **Check hoses and connections** for leaks or wear and replace them if needed.
- Store the pump in a **dry, dust-free place** when not in use for long periods.

5. Emergency Precautions

- **Unplug the pump immediately** if it comes into contact with water or malfunctions.
- **Do not attempt repairs yourself**—contact the manufacturer or a qualified professional for service.

INSTRUCTIONS FOR RECYCLING AND DISPOSAL:



This label means that the product cannot be disposed of as other household waste throughout the EU. To prevent potential damage to the environment or human health from uncontrolled waste disposal. Recycle responsibly to promote the sustainable use of material resources. If you want to return a used device, use the drop-off and collection system, or contact the retailer from whom you bought the product. The retailer can accept the product for environmentally safe recycling.



A declaration by the manufacturer that the product complies with the requirements of the applicable EU Directives.