

# EN: PROSHAKER – USER MANUAL

## PRODUCT SPECIFICATIONS

**Product capacity:** 650 ml / 22 oz

**Product size:** 121 × 90 × 196 mm

**Package size:** 115 × 95 × 205 mm

**Net weight:** 317 g

**Battery capacity:** 1200 mAh

**Motor voltage:** 3 V

**Motor speed:** 7000 rpm

**Rated power:** 7.4 W

**Nominal voltage:** 3.7 V = 2 A

**Charging time:** Approx. 2 hours

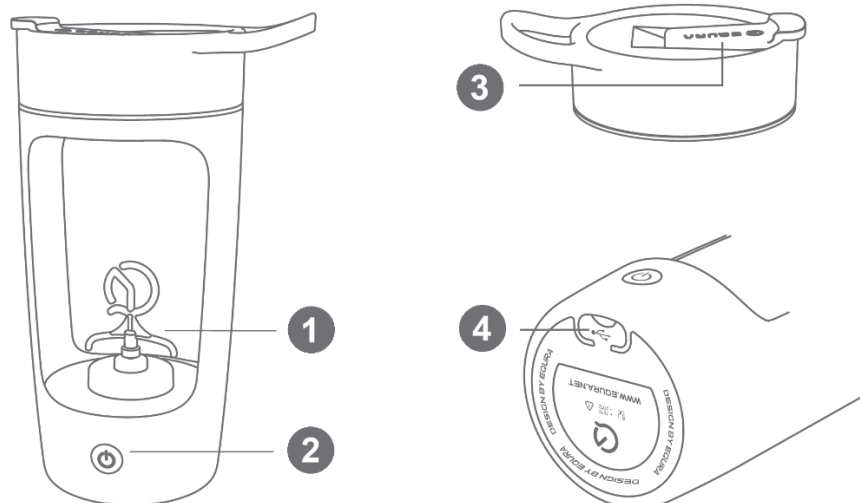
**Operating time:** Approx. 60 minutes (depending on usage)

**Cup body material:** ABS, PCTG (food-grade)

**Package contents:** Electric shaker bottle, user manual, Type-C charging cable

---

## PRODUCT OVERVIEW

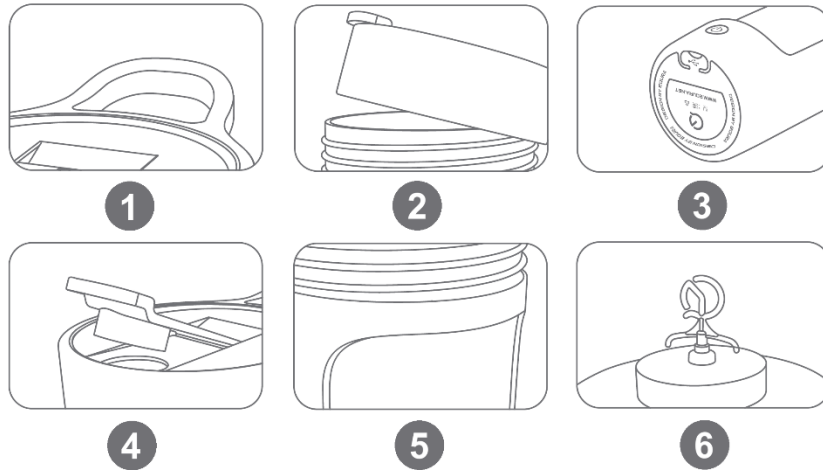


1. Mixing blades
  2. Power button
  3. Drinking lid
  4. Silicone plug (Type-C charging port)
- 

## PRODUCT FEATURES

1. **Portable handle:** Designed for easy carrying or hanging during travel or workouts.
2. **Leak-resistant lid:** Equipped with a food-grade silicone seal and spiral thread to prevent leakage during use.
3. **Type-C charging port:** Provides fast, convenient charging and compatibility with common charging devices.
4. **Secure drinking spout:** Ensures tight closure to prevent spills when not in use.

5. **Durable bottle body:** Made of high-quality, food-grade PCTG material, resistant to wear and suitable for daily use.
6. **High-speed mixing system:** Efficient blades rotate at high speed to ensure smooth and consistent mixing results.



**Suitable for mixing:** Coffee, milkshakes, protein powders, oatmeal, soybean milk, milk, sesame paste, and other liquid-based beverages.

---

#### BEFORE FIRST USE

- Fully charge the device before initial use.
  - Clean all parts that come into contact with food or liquids.
  - Ensure all components are properly assembled before operation.
- 

#### PRODUCT FUNCTIONS

##### Start / Stop Operation

1. Press the power button once to start mixing.
2. Press the button again to stop operation at any time.
3. The device will automatically switch off after 60 minutes of continuous operation for safety protection.

##### Indicator Lights

- **Working mode:** White light remains on
- **Charging:** Red light flashes
- **Low battery:** Red light flashes continuously
- **Fully charged:** Red light remains on

##### Charging Instructions

1. Use the provided Type-C cable or a compatible cable.
2. Connect to a power source with output of 5 V / 1 A–2 A.

3. Charging time is approximately 2 hours.
  4. Ensure the charging port is dry before connecting the cable.
  5. Do not operate the device while charging to ensure safety and battery longevity.
- 

## USAGE INSTRUCTIONS

1. Add liquid first, then add powders or ingredients for optimal mixing.
  2. Do not exceed the maximum capacity marking.
  3. Securely close the lid before starting the device.
  4. Hold the bottle upright during operation.
  5. After mixing, turn off the device before opening the lid.
- 

## MIXING PERFORMANCE

- The device creates a vortex flow to ensure even mixing.
  - Slight noise and vibration during operation are normal.
  - Best performance is achieved with liquids and soluble powders.
- 

## CLEANING

1. Switch off the device before cleaning.
  2. Do not use steel wool, abrasive cleaners, or corrosive substances (e.g., gasoline or acetone).
  3. Rinse with clean water or warm water and mild detergent.
  4. For quick cleaning, add water and a small amount of detergent, run the device briefly, then rinse thoroughly.
  5. Ensure the charging port is closed and dry after cleaning.
- 

## STORAGE CONDITIONS

- Store the product in a clean, dry, and well-ventilated place.
  - Avoid direct sunlight and high humidity.
  - Ensure the product is completely dry before storage.
- 

## NOTES

1. This product is designed for mixing liquids and powders only. It is not suitable for crushing ice or hard substances.
  2. **Waterproof rating:** IPX7. The bottle can be rinsed with water but must not be submerged or soaked.
  3. Do not operate the device when empty.
-

## PRODUCT AND USER SAFETY

1. This product is intended only for mixing beverages or nutritional drinks.
  2. Do not expose the product to high temperatures (e.g., microwave ovens, ovens, or sterilization cabinets) and do not freeze it.
  3. Do not add dry ice, carbonated beverages, or substances that may generate high internal pressure.
  4. Avoid adding strong acids or alkalis that could damage the container.
  5. Do not store dairy products or baby food in the container for extended periods.
  6. Keep the product out of reach of children.
  7. Do not use the product with hot beverages to avoid the risk of burns or pressure buildup.
  8. Avoid dropping, hitting, or exposing the product to strong impacts.
  9. Do not immerse the motor base in water.
  10. Do not use metal tools or sharp objects for cleaning, as they may damage the surface.
- 

## TROUBLESHOOTING

- **Device does not start:** Check battery level and recharge if necessary.
  - **Weak mixing performance:** Ensure sufficient liquid is added and ingredients are not too thick or solid.
  - **Unusual noise:** Stop operation and check for blockage or improper assembly.
- 

## INSTRUCTIONS FOR RECYCLING AND DISPOSAL:



This label means that the product cannot be disposed of as other household waste throughout the EU. To prevent potential damage to the environment or human health from uncontrolled waste disposal. Recycle responsibly to promote the sustainable use of material resources. If you want to return a used device, use the drop-off and collection system, or contact the retailer from whom you bought the product. The retailer can accept the product for environmentally safe recycling.



A declaration by the manufacturer that the product complies with the requirements of the applicable EU Directives.