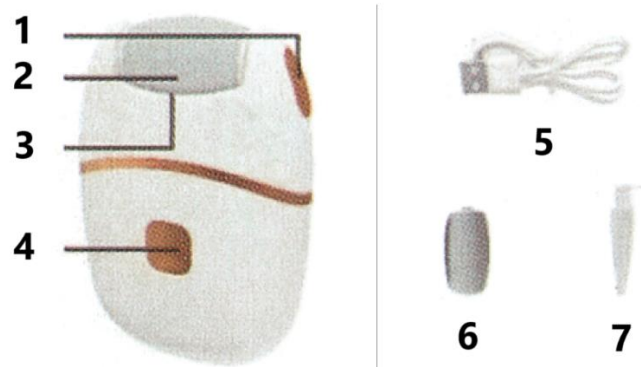


EN: PETAGRIND – USER MANUAL

PRODUCT OVERVIEW



1. Release button
2. Grinding head
3. LED light
4. ON/OFF switch
5. Type-C USB charging cable
6. Spare grinding head
7. Cleaning brush

CHARGING INSTRUCTIONS

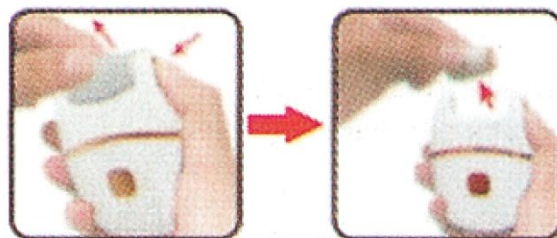
1. Ensure the device is switched off.
 2. Insert the power cable into the charging port on the device.
 3. Plug the USB connector into a power bank, computer USB port, or other power source.
 4. A red indicator light will appear while charging. When fully charged, the indicator will turn green.
- Charging time is approximately 1.5 hours.

REPLACING THE GRINDING HEAD

Replace the grinding head as needed for optimal results. Depending on usage frequency and the surface area being treated, the grinding head may need replacement after two full uses.

Always turn off the device before replacing the grinding head.

1. Hold the grinding head with one hand, and press the release button on the side of the device with the other. The head will detach outward (see Figures 6 and 7).
2. Insert a new grinding head until you hear a 'click' sound, ensuring it is securely attached.



Note: Do not operate the device without a properly installed grinding head.

Important: The device comes with a coarse grinding head pre-installed in the packaging.

STORAGE

Store the device in a dry, cool location out of reach of children.

Avoid placing it in hot or humid environments.

HOW TO USE THIS PRODUCT

This product is designed for smoothing the skin on feet and heels only. Do not use on other parts of the body.

1. Wash and thoroughly dry the skin. Avoid use on broken or irritated skin.
2. Ensure the grinding head is securely attached to the device. (Refer to the "Replacing the Grinding Head" section if needed.)
3. Remove the protective cover before use.
4. Press the power button to turn on the device. It has two speed settings:
 - Press once for low speed
 - Press again for high speed
 - Alternatively, quickly press twice to switch directly to high speed
5. Gently rotate the device (forward, backward, or side to side) over callused or rough skin for 2–3 seconds. Do not apply pressure. The device will automatically stop if too much force is applied.
 - Check if the area has become soft.
 - If needed, repeat in 2–3 second intervals until desired smoothness is achieved.
6. For cleaning instructions, refer to the "Cleaning" section.
7. After use, reattach the protective cover.



INSTRUCTIONS FOR RECYCLING AND DISPOSAL:



This label means that the product cannot be disposed of as other household waste throughout the EU. To prevent potential damage to the environment or human health from uncontrolled waste disposal. Recycle responsibly to promote the sustainable use of material resources. If you want to return a used device, use the drop-off and collection system, or contact the retailer from whom you bought the product. The retailer can accept the product for environmentally safe recycling.



A declaration by the manufacturer that the product complies with the requirements of the applicable EU Directives.