

## EN: PABLO – USER MANUAL

### PRODUCT DETAILS

**Material:** Silicone + ABS

**Product Size:** 6 × 2.76 × 5.52 inches

**Product Modes:** 9 Thrusting & Vibration Modes

**Operating Noise:** ≤ 50 dB

**Waterproof Rating:** Splash-proof (daily waterproof)

**Charging Time:** Approx. 90 minutes

**Working Time:** Approx. 45 minutes (when fully charged)

### PACKING LIST

- 1 × Vibrator
  - 1 × USB Charging Cable
  - 1 × Stretchable Belt
  - 1 × User Manual
- 

### IMPORTANT NOTES

1. Please read this manual carefully before using the product.
  2. Fully charge the device before first use.
  3. Use only a compatible adapter for charging.
  4. Use the charging cable included in the package.
  5. Do not use the product while it is charging.
- 

### HOW TO USE

The power button is located at the bottom of the device.

1. Press and hold the power button to turn on the device. The motor will enter standby mode without movement.
  2. Short press the power button to cycle through the 9 thrusting and vibration modes.
  3. Press and hold the power button again to turn off the device.
- 

### APP CONTROL FUNCTION

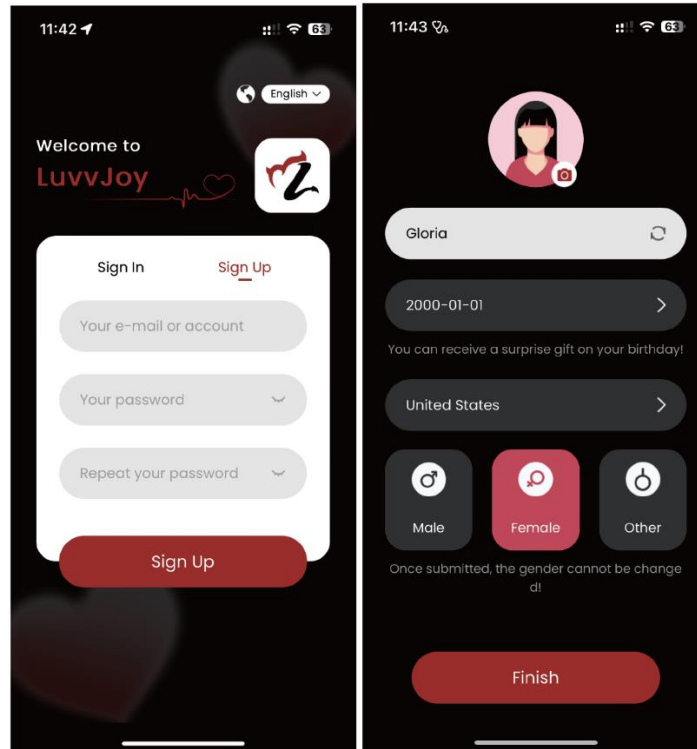


Download and install the app by scanning the QR code below to access the **LuvvJoy App**, or search for “LuvvJoy” in the Apple App Store. (Scanning the QR code is recommended.)

---

## Account Registration

1. Open the app and tap “Sign In” to register.
2. Enter your email address, create a password, and confirm it.
3. Log in and follow the on-screen instructions to complete your profile information.



---

## Device Pairing (Home Page)

Turn on Bluetooth on your phone. Pair the device using one of the following methods (required only for the first connection):



1. Scan the product QR code.
2. Enter the digital code: 301001.
3. Search for and select the product name: “QueenRide.”

---

## Device Control Functions

After selecting your device, you will enter the control interface.



1. **Love Button** – Draw patterns to control vibration frequency.
  2. **Record Button** – Record custom vibration patterns.
  3. **Modes Library** – View and use saved patterns.
  4. **Bind Button** – Share device control with a partner.
- 

### Classic Mode

- Classic Mode provides 9 thrusting and vibration modes.
  - Tap a mode to activate it (the icon will flash). Tap again to stop and return to standby mode (the icon will stop flashing).
- 

### Draw Mode

- a) Press and hold the “Love Button” while moving your finger across the screen. The vibration frequency will adjust according to the pattern you draw.
  - b) Tap the “Record Button,” then slide your finger on the “Love Button” to create a custom pattern. Tap the “Record Button” again to stop recording. The saved pattern will appear under the icon in the top-right corner.
- 

### Interact Mode

Once both users have paired their devices, your partner can enter your Account ID and tap the “Bind Button” to send a control request. After you approve the request, your partner can control your device using the 9 thrusting and vibration modes.

---

### Music Mode

- Select and play music, and the device will vibrate in sync with the rhythm.
  - The app includes 8 built-in scenes.
  - Android users can also select music from their phone’s library and return to the app interface to enable vibration sync. This feature is not supported on iOS devices.
- 

### Game Mode

- a) **Truth & Dare**  
Enter both nicknames, draw a card, and follow the instructions. The game offers two levels: Mild and Passionate.

## b) Sexy Slot Machine

Tap the “Start” button to begin. The text will scroll automatically. Tap the “Stop” button three times to stop the scroll and reveal the task.

---

## Finding Your Account ID

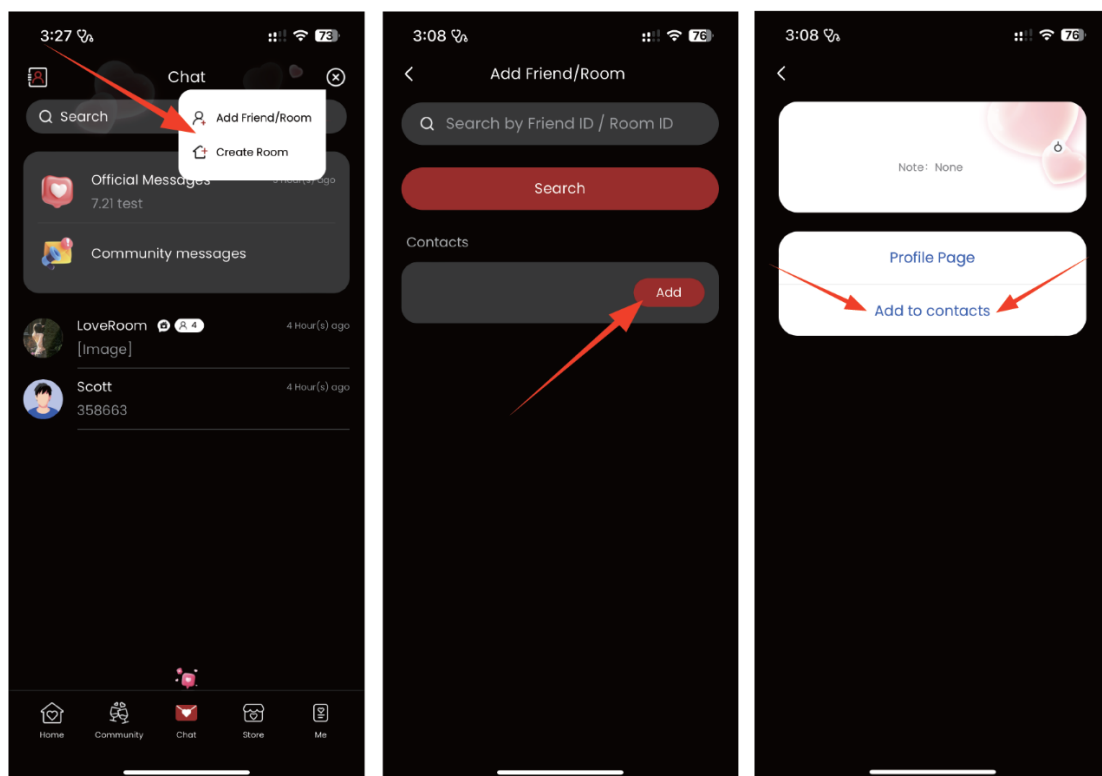
Go to the “Me” page. Your Account ID is displayed under your username.

---

## CHAT FUNCTIONS

### Add Friends

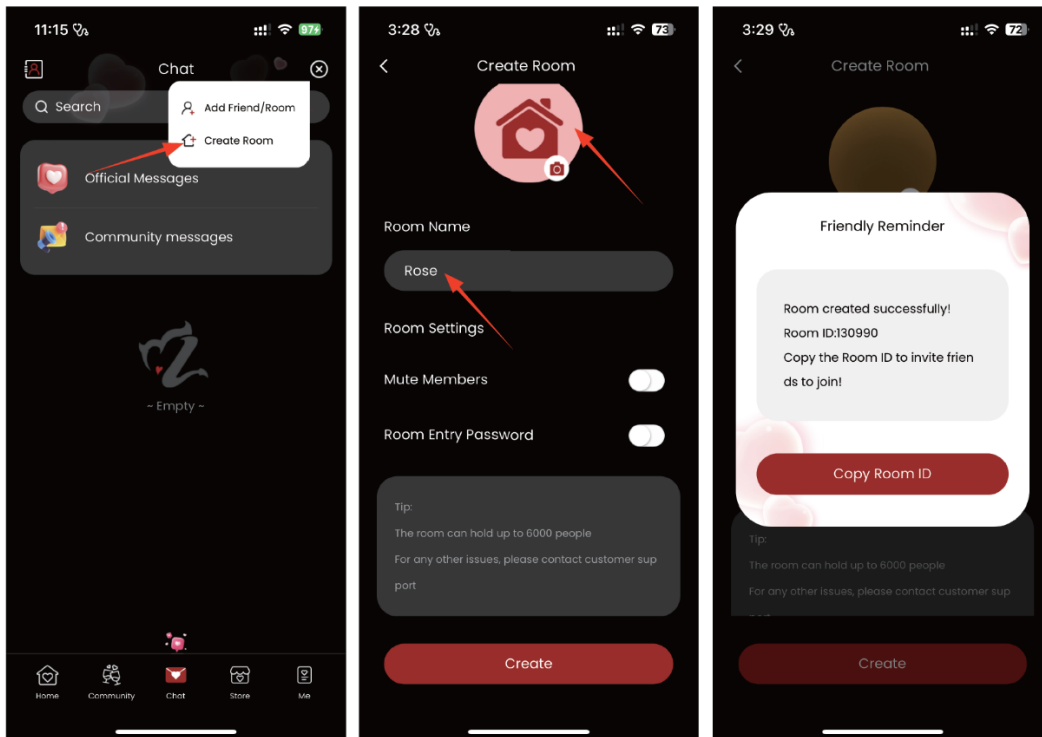
1. Tap the “+” icon in the top-right corner.
2. Select “Add Friend/Room.”
3. Enter your friend’s ID and tap “Add.”
4. Tap “Add to Contacts” to confirm.



---

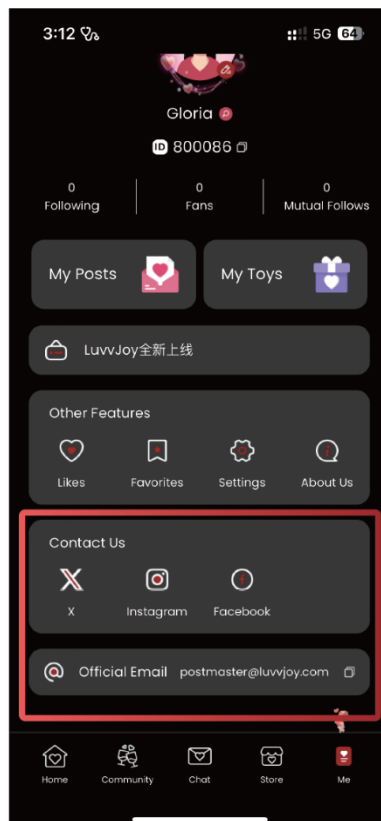
### Create a Room

1. Tap the “+” icon in the top-right corner.
2. Select “Add Friend/Room.”
3. Enter a room name, upload an image, and tap “Create.”
4. Tap “Copy Room ID” to invite others and enable multi-user interaction within the same room.



## Interact with a Friend

In the chat window, tap the “+” icon in the bottom-left corner:



1. **Interact** – Request remote control of your device.
2. **Image** – Send pictures.

3. **Voice Call** – Make voice calls.
4. **Video Call** – Make video calls.

During voice or video calls, you can minimize the call screen to access the Interact and Image functions simultaneously.

**Tips:** If you are unable to connect the product or have any other questions, go to the “Me” page and contact customer support through the available options.

---

## HOW TO CHARGE

The indicator light will flash while charging.  
Once fully charged, the indicator light will remain steadily on.

---

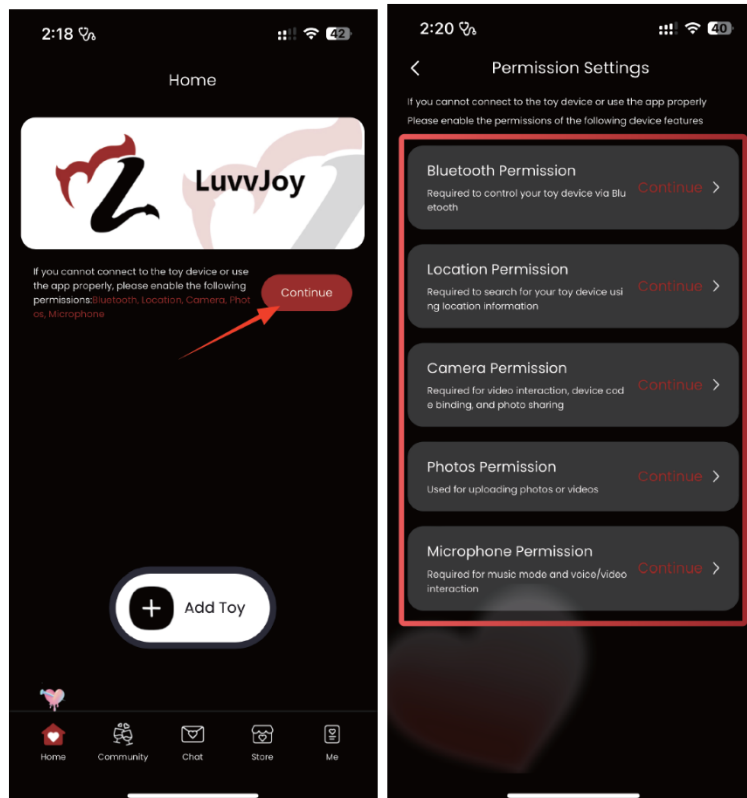
## CLEANING & STORAGE

1. Turn off the device before cleaning.
2. Wash the toy with warm water and mild, antibacterial soap.
3. After washing, dry the device thoroughly with a towel or paper tissue.
4. Store in a cool, dry place.
5. Avoid direct sunlight, high temperatures, excessive pressure, and humid environments.

---

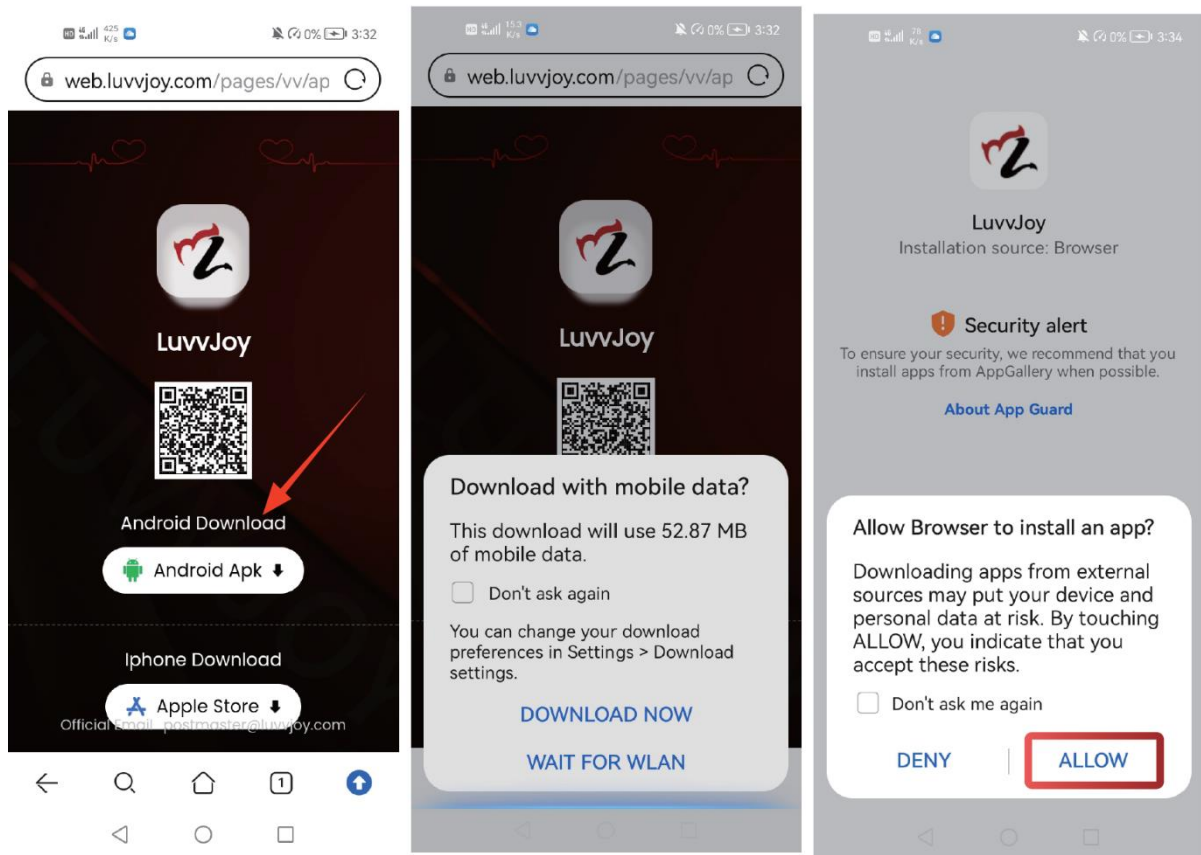
## APP TROUBLESHOOTING

**I can't control the device.**



When opening the app for the first time, make sure to allow and accept all permission requests.

### I can't install the app.



When downloading the app for the first time, ensure that you allow and accept all required permissions.

### INSTRUCTIONS FOR RECYCLING AND DISPOSAL:



This label means that the product cannot be disposed of as other household waste throughout the EU. To prevent potential damage to the environment or human health from uncontrolled waste disposal. Recycle responsibly to promote the sustainable use of material resources. If you want to return a used device, use the drop-off and collection system, or contact the retailer from whom you bought the product. The retailer can accept the product for environmentally safe recycling.



A declaration by the manufacturer that the product complies with the requirements of the applicable EU Directives.