

EN: LIFTPRO – USER MANUAL

PRODUCT PARAMETERS

Product Name: LED Light Beauty Device

Charging Voltage: 5V = 1A

Rated Power: 2.5W

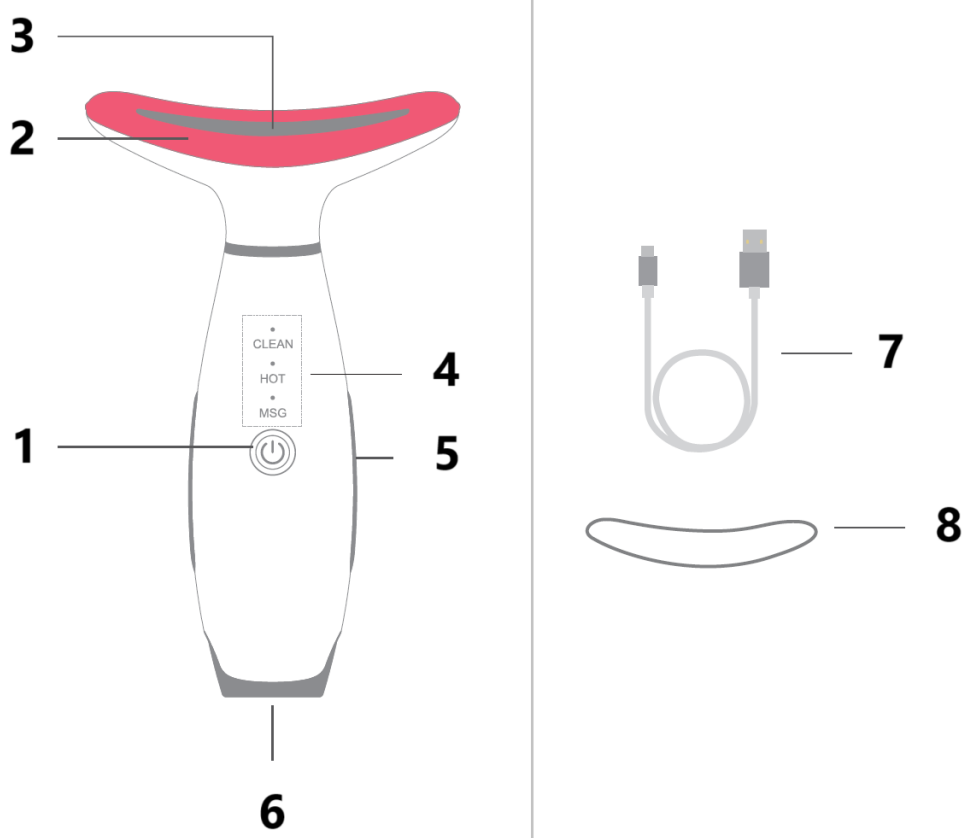
Battery: 3.7V / 600mAh

Product Size: 135 × 85 × 39mm

Charging Time: 2.5 Hours

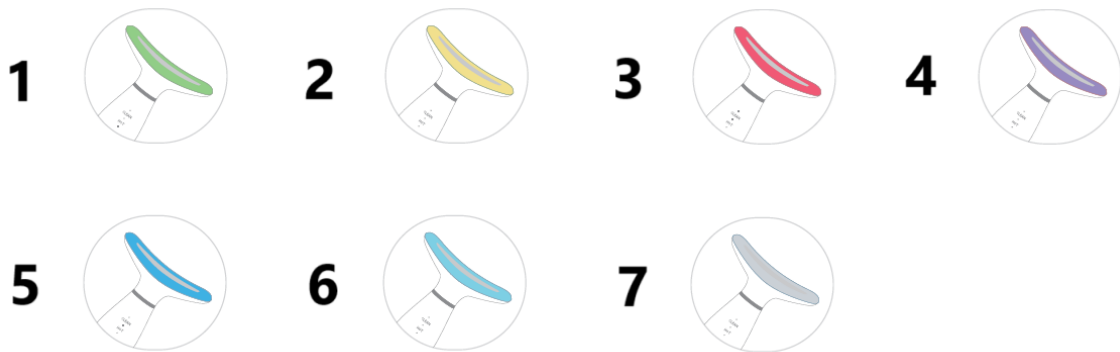
Material: ABS + PC Plastic

PRODUCT OVERVIEW



1. Power Button / Light Modes
 2. 7-Color LED Light
 3. Massage Sensor Bar
 4. Mode Display
 5. Sensing Ring (The device vibrates only when you hold the rings on both sides.)
 6. Type-C Interface
 7. Type-C Charging Cable
 8. Protective Cover
-

LED COLOR LIGHTS



1. Green Light
2. Yellow Light
3. Red Light
4. Purple Light
5. Blue Light
6. Cyan Light
7. White Light

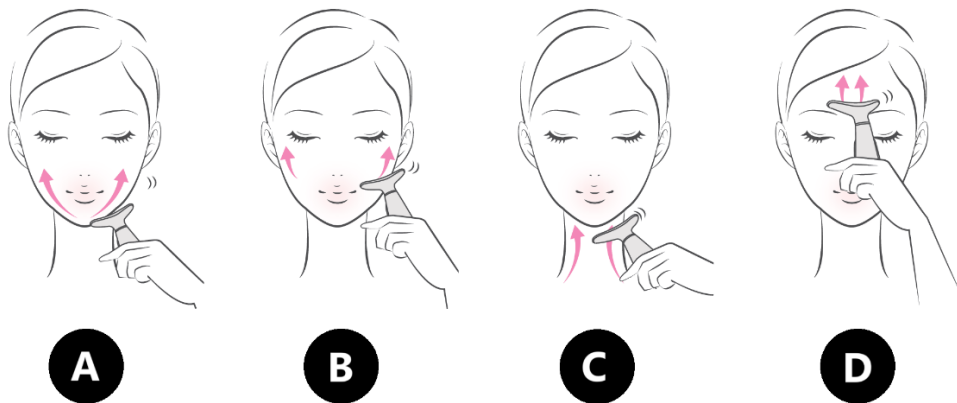
PRODUCT FUNCTIONS

- **7-Color LED Light:** Utilizes multiple spectral lights to address various skin concerns at different depths. The photon beauty instrument emits bio-active cold light, which does not generate high heat. This technology uses low-energy pure light and unique light modulation, offering a natural, gentle, low-risk, and side-effect-free skincare solution.
- **CLEAN Mode:** Helps cleanse the skin and improve nutrient absorption.
- **HOT Mode:** Maintains a constant temperature to enhance the absorption of skincare products, making treatments more effective and comfortable.
- **MSG Mode:** Works best with gel or water-based emulsions, enhancing the microcurrent effect.
- **Vibration Mode:** Provides gentle massage stimulation to lift and tone the face and neck muscles.

HOW TO USE

1. When the device is powered on, press the sensing ring while ensuring the massage head makes contact with the neck to activate the vibration function.
2. Apply an even layer of skincare product to the neck.
3. Select a mode according to your personal needs. Hold the massage head and move it from the bottom to the top of the neck.
4. Massage the back of the neck as well. Use the device to stimulate acupuncture points by pressing, squeezing, caressing, and pushing.

Massage Techniques:



- A. **Face Line:** Massage from the chin to the cheeks.
- B. **Cheekbone:** Massage from the cheeks to the outer eye corners.
- C. **Neckline:** Massage from the neck to the chin.
- D. **Forehead:** Massage the forehead from bottom to top.

CAUTIONS

1. This device is not recommended for individuals who have undergone facial plastic surgery, have subcutaneous metal implants, are pregnant, or are menstruating.
2. Do not place the device in the bathroom or any humid environment, as this may cause a short circuit.
3. Do not use the device while it is charging.
4. Keep the device away from direct sunlight and avoid exposure to corrosive chemicals.
5. The device requires approximately 2 hours to fully charge and provides 2–12 hours of usage.
6. A red indicator light will turn on while charging, and it will switch to green once fully charged.
7. This device has a memory function—when turned on, it will automatically resume the last-used mode.
8. For power efficiency, the device will automatically shut down after 3 minutes of inactivity.

INSTRUCTIONS FOR RECYCLING AND DISPOSAL:



This label means that the product cannot be disposed of as other household waste throughout the EU. To prevent potential damage to the environment or human health from uncontrolled waste disposal. Recycle responsibly to promote the sustainable use of material resources. If you want to return a used device, use the drop-off and collection system, or contact the retailer from whom you bought the product. The retailer can accept the product for environmentally safe recycling.



A declaration by the manufacturer that the product complies with the requirements of the applicable EU Directives.