

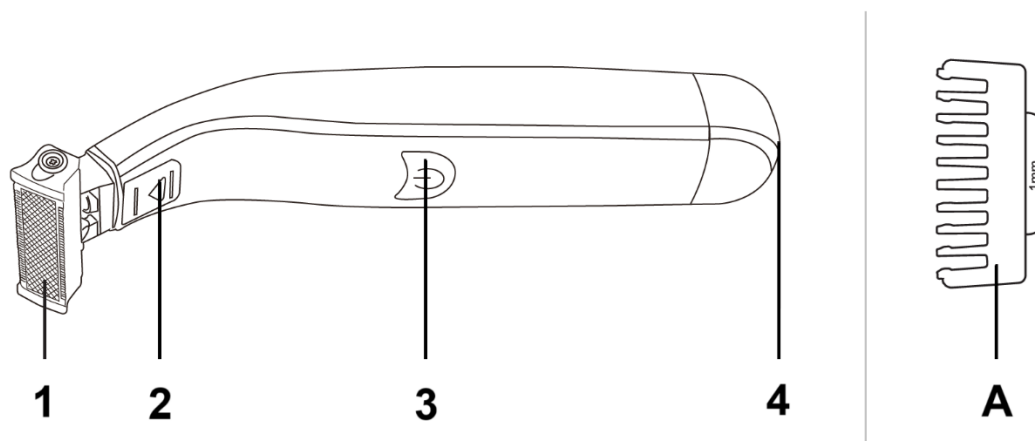
# EN: HYDROCUTER – USER MANUAL

## FULL BODY SHAVER – PRODUCT PARAMETERS

**Power Source:** Rechargeable

**Adapter:** Input AC 100–240V, 50/60Hz | Output DC 5V, 1000mA

## PRODUCT PARTS



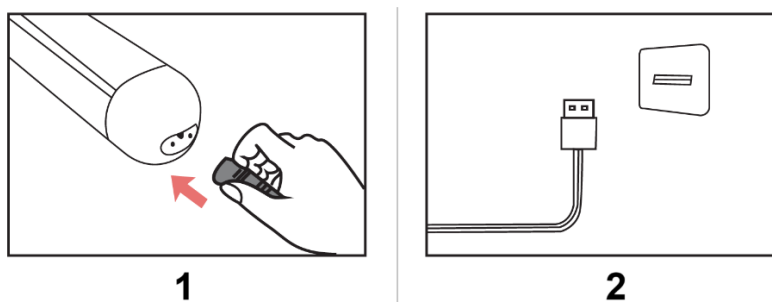
1. Cutter head
2. Button to remove the cutter head
3. Power switch
4. Charging port

## Accessories

- A. 4× Comb attachments (1 mm, 2 mm, 4 mm, 6 mm)
- B. Cleaning brush
- C. USB charging cable

## HOW TO CHARGE VIA USB

Ensure the shaver is switched off. Connect the USB charging cable to the shaver, then connect the other end to a suitable power source. The charging indicator will illuminate during charging.



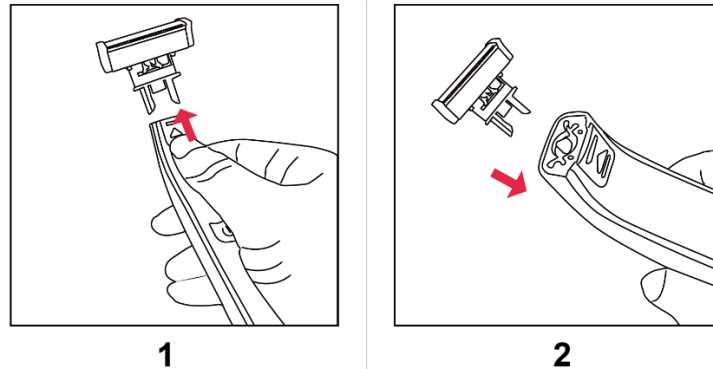
## BEFORE USE

**Before trimming:** Comb your beard or hair to remove tangles and achieve an even trim.

**Warning:** Before washing the shaver with water, ensure it is switched off and disconnected from the power source.

---

## INSTALLING AND REMOVING THE CUTTER HEAD



1. **To remove:** Gently press the release button; the cutter head will pop out easily.
  2. **To install:** Align the buckle and insert the cutter head until it clicks into place.
- 

## CLEANING

Ensure the shaver is switched off and disconnected from the power source. Press the release button to remove the cutter head. Use the cleaning brush to remove hair, or rinse the cutter head under running water. Ensure it is completely dry before reattaching and using.

**Cleaning caution:** Do not use harsh or corrosive cleaning agents on the appliance.

---

## STORAGE

- Store the appliance in a dry, moisture-free location. Avoid areas with temperatures exceeding 140 °F (60 °C).
- Do not wrap the USB charging cable around the appliance during storage.

**Important Safety Warning:** To reduce the risk of burns, electric shock, fire, or personal injury, never leave the appliance unattended while plugged into a power source.

---

## INSTRUCTIONS FOR RECYCLING AND DISPOSAL:



This label means that the product cannot be disposed of as other household waste throughout the EU. To prevent potential damage to the environment or human health from uncontrolled waste disposal. Recycle responsibly to promote the sustainable use of material resources. If you want to return a used device, use the drop-off and collection system, or contact the retailer from whom you bought the product. The retailer can accept the product for environmentally safe recycling.



A declaration by the manufacturer that the product complies with the requirements of the applicable EU Directives.