

EN: DJREE – USER MANUAL

Live Sound Card User Manual

PRODUCT INTRODUCTION

Dear Customer,

Thank you for purchasing our product. Before using it, please read this manual carefully to ensure correct operation and keep it for future reference.

This product is a professional audio mixer designed for singing and live streaming. It features a built-in digital DSP chip and supports all major live streaming platforms. Key features include microphone input, mute control, reverb, voice beautification, MC mode, sound effects, and OTG connectivity. It perfectly meets the diverse needs of users for both mobile phone and computer live streaming.

PACKING LIST

- Main Unit ×1
 - Data Cable ×1
 - 3.5mm Audio Cables ×2
 - User Manual ×1
-

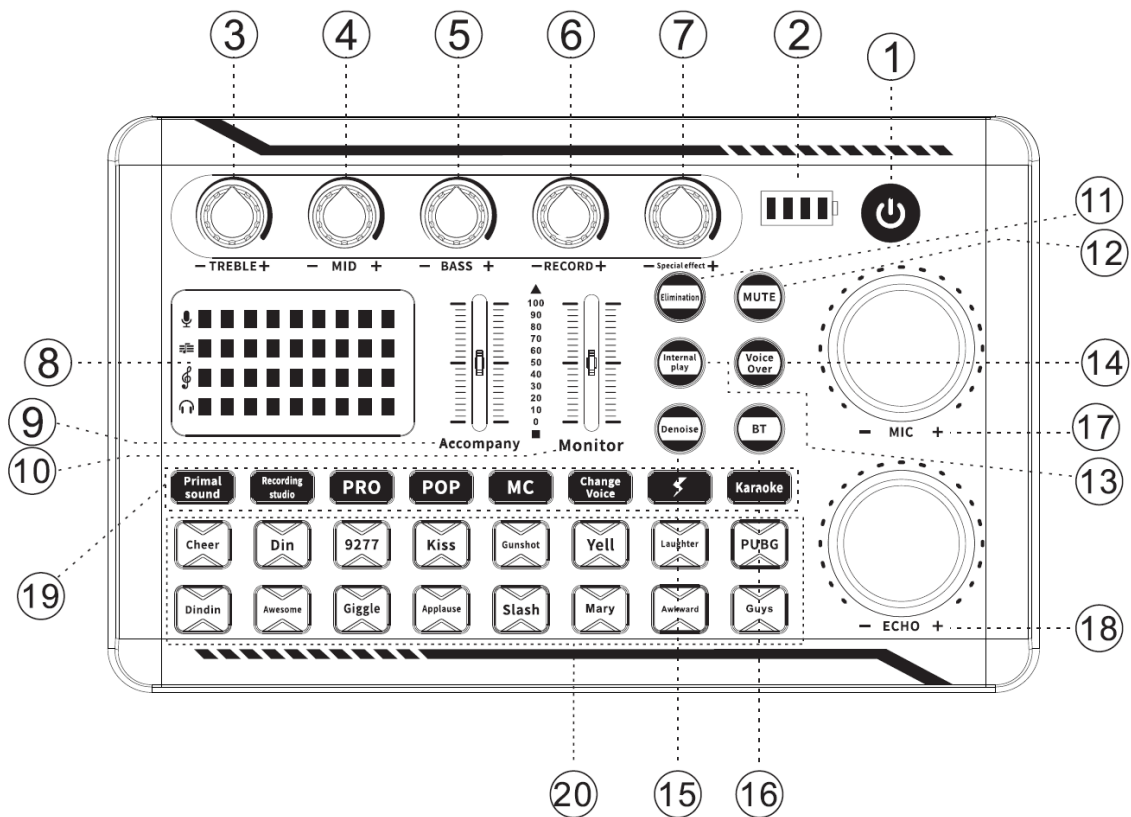
SPECIFICATIONS

- **Sampling Rate:** 44.1 kHz
 - **Sampling Bit Depth:** 16 bit
 - **Dimensions:** 191 × 118 × 45 mm
 - **Weight:** 370 g
 - **Battery Capacity:** 1200 mAh
 - **Power Output:** 500 mW
 - **Power Consumption:** 150 mAh
 - **Charging Input:** DC 5V/1A
-

MAIN UNIT PANEL INTRODUCTION

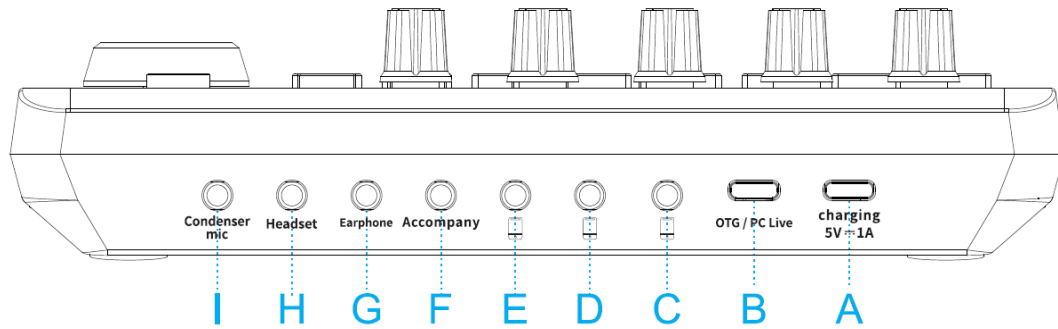
1. **Power:** Press and hold to turn the device on or off.
2. **Battery Level Indicator:** Displays the battery status for easy monitoring during use.
3. **Treble:** Adjusts the microphone treble. Rotate left to decrease, right to increase.
4. **Midrange:** Adjusts the microphone midrange. Rotate left to decrease, right to increase.
5. **Bass:** Adjusts the microphone bass. Rotate left to decrease, right to increase.
6. **Recording Volume:** Adjusts the recording level.
7. **Sound Effects Volume:** Adjusts the sound effects level.
8. **Volume Indicator:** LED changes based on the current volume setting.
9. **Accompaniment Volume:** Adjusts the volume of the accompaniment track.
10. **Monitoring Volume:** Adjusts the monitoring level.
11. **Original Vocal Elimination:** Removes the original vocals from input accompaniment tracks (requires stereo audio source).
12. **Mute:** When enabled, the microphone and headset inputs cannot be monitored; accompaniment, sound effects, and live broadcast audio remain unaffected.

13. **Internal Loopback:** When enabled, the computer audio can be recorded back to the computer. When disabled, it can only be monitored, not recorded.
14. **Duckling (Vocal Emphasis):** When enabled, the human voice is emphasized while the music volume decreases. When disabled, music and vocals are balanced.
15. **Noise Reduction:** Reduces the impact of ambient noise effectively when enabled.
16. **Bluetooth:** Indicator flashes when active. Turn on your device's Bluetooth, search for “F998,” and connect. After successful pairing, the indicator stays on, and the device is ready for use.
17. **Microphone Volume:** Adjusts the microphone input volume.
18. **Reverb:** Adjusts reverb level.
19. **Preset Modes:** Short-press to switch between different modes; the key light flashes to confirm mode change.
20. **Sound Effects:** Includes 16 types of sound effects. Short-press to play the desired effect.



JACK INTRODUCTION

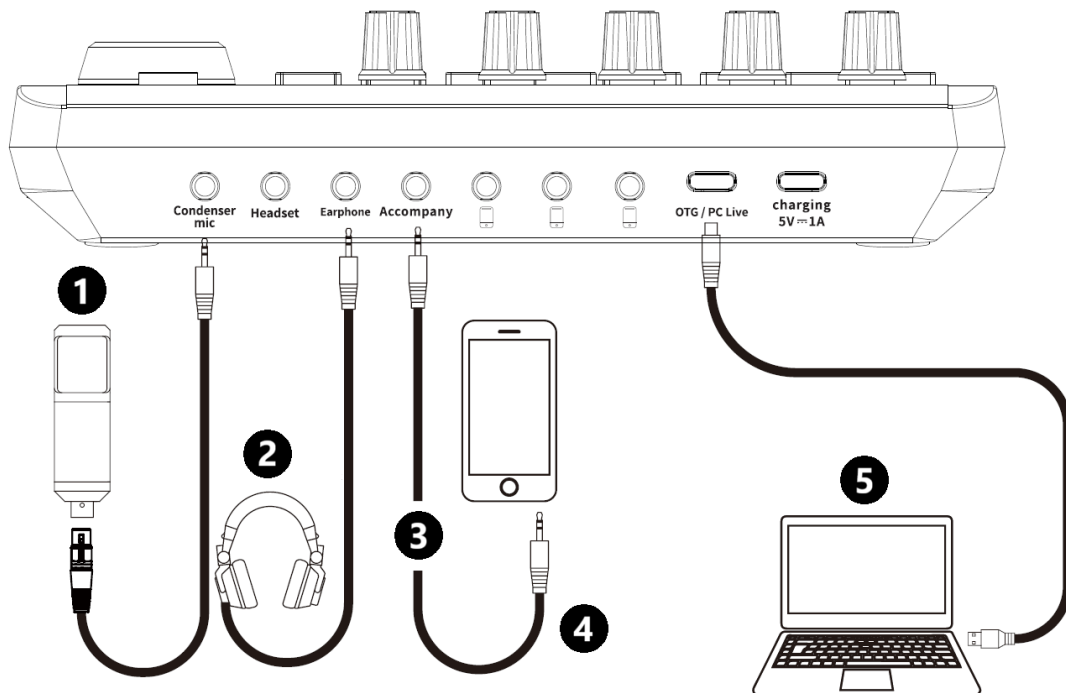
- A. **Charging:** Port for charging the sound card.
- B. **OTG/Computer:** Connect a smartphone or computer via OTG cable for live streaming.
- C. **Live Streaming:** Connect a smartphone with a 3.5mm audio cable for live streaming, singing, or recording.
- D. **Live Streaming:** Duplicate port for live streaming using 3.5mm cable.
- E. **Live Streaming:** Third port for live streaming using 3.5mm cable.
- F. **Accompaniment:** Connect an audio source via 3.5mm cable to input accompaniment music.
- G. **Headphones:** Compatible with 3.5mm plug headphones.
- H. **Headset:** Compatible with 3.5mm plug headsets.
- I. **Condenser Microphone:** Compatible with 3.5mm plug condenser microphones.



CONNECTION DIAGRAM

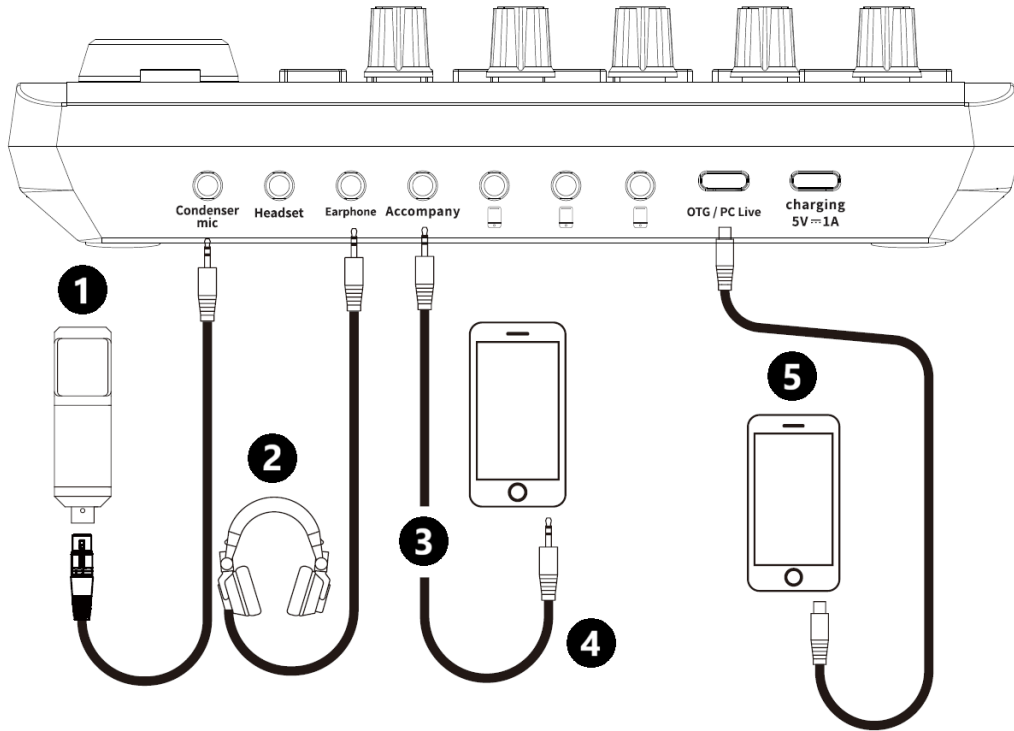
Computer Live Streaming:

1. Microphone
2. Monitoring Headphones
3. Accompaniment Source (Phone)
4. 3.5mm Audio Cable
5. Live Streaming Computer



Mobile Phone Live Streaming:

1. Microphone
2. Monitoring Headphones
3. Accompaniment Source (Phone)
4. 3.5mm Audio Cable
5. Live Streaming Phone



INSTRUCTIONS FOR RECYCLING AND DISPOSAL:



This label means that the product cannot be disposed of as other household waste throughout the EU. To prevent potential damage to the environment or human health from uncontrolled waste disposal. Recycle responsibly to promote the sustainable use of material resources. If you want to return a used device, use the drop-off and collection system, or contact the retailer from whom you bought the product. The retailer can accept the product for environmentally safe recycling.



A declaration by the manufacturer that the product complies with the requirements of the applicable EU Directives.