

EN: ARTIONIC – USER MANUAL

TECHNICAL PARAMETERS

RC Battery: Li-MnO₂ CR2025, 3V, 150mAh

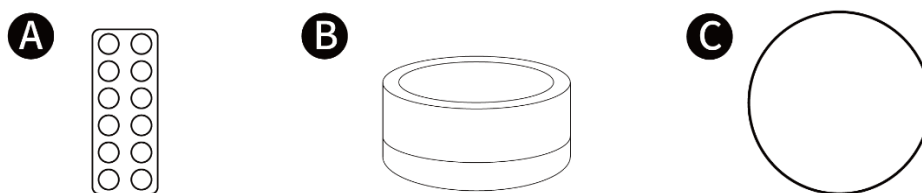
Product battery: HYLN-IMR18650 Li-ion, 3.7V, 1500mAh, 5.55Wh

Color range: Warm white + 12 RGB color lights

Lumen range:

- Warm white: 68lm
- RGB color light: 25lm

PACKAGE CONTENTS

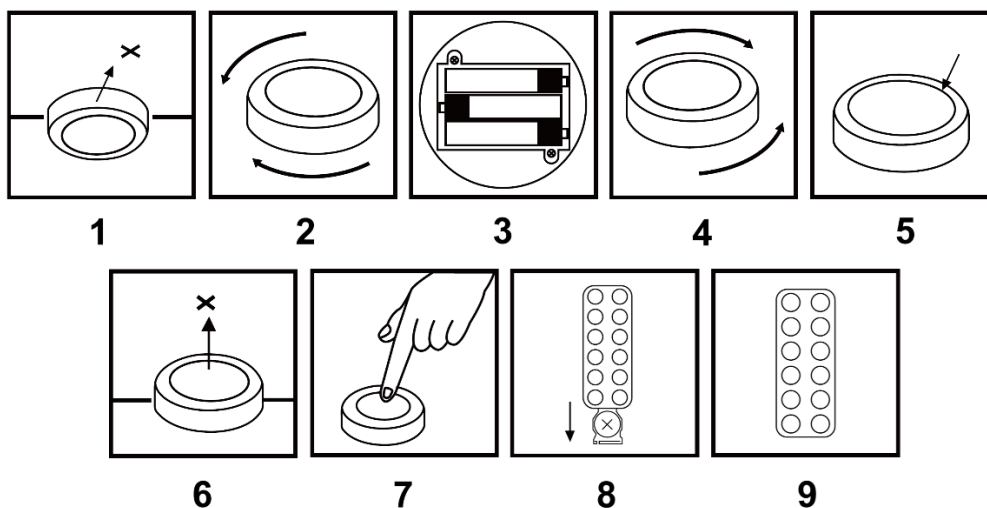


- A. Remote Control
- B. LED Puck Light
- C. Adhesive Mounting Pad

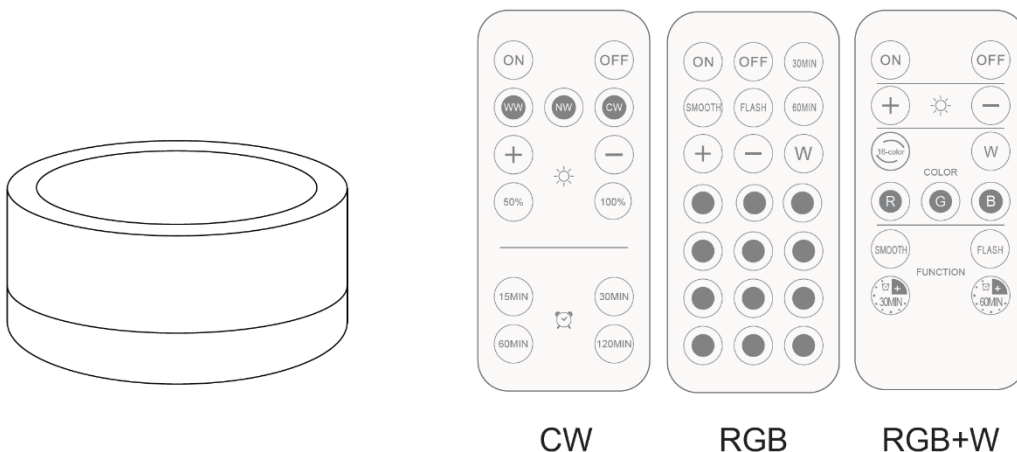
SAFETY INFORMATION

Please read and fully understand this manual before assembling, operating, or installing the product. Before beginning installation, ensure all parts are present. Compare the contents with the package list. If any part is missing or damaged, do not attempt to assemble, install, or operate the product.

ASSEMBLY INSTRUCTIONS



1. Determine and lightly mark the location for each puck light.
2. To open the puck light, rotate the two halves until the alignment marks line up, then lift off the top cover.
3. Insert the batteries into each puck, ensuring correct polarity (+/-).
4. Reassemble the puck light by aligning the covers and rotating them to lock securely.
5. Attach one adhesive mounting pad to the underside of each puck light.
6. Peel off the adhesive backing and press the puck firmly against the marked mounting surface.
7. By pressing the center of the lamp body, you can manually turn the lamp on or off and adjust its color.
8. To replace the remote control battery, follow the instructions on the back of the remote. Slide out the battery drawer, insert a new battery (+ side facing up), and slide the drawer back into place.
9. Use the remote control to switch the lamp on/off, adjust brightness, and set the operating duration. The lamp can be conveniently placed in bathrooms, wardrobes, cabinets, bedside tables, corridors, and more—providing practical lighting at night.



INSTRUCTIONS FOR RECYCLING AND DISPOSAL:



This label means that the product cannot be disposed of as other household waste throughout the EU. To prevent potential damage to the environment or human health from uncontrolled waste disposal. Recycle responsibly to promote the sustainable use of material resources. If you want to return a used device, use the drop-off and collection system, or contact the retailer from whom you bought the product. The retailer can accept the product for environmentally safe recycling.



A declaration by the manufacturer that the product complies with the requirements of the applicable EU Directives.